



## Meridian Model Flyers Association

*“A non-profit Organization dedicated to the building and flying of model aircraft”*



Stony Plain, Alberta

### History:

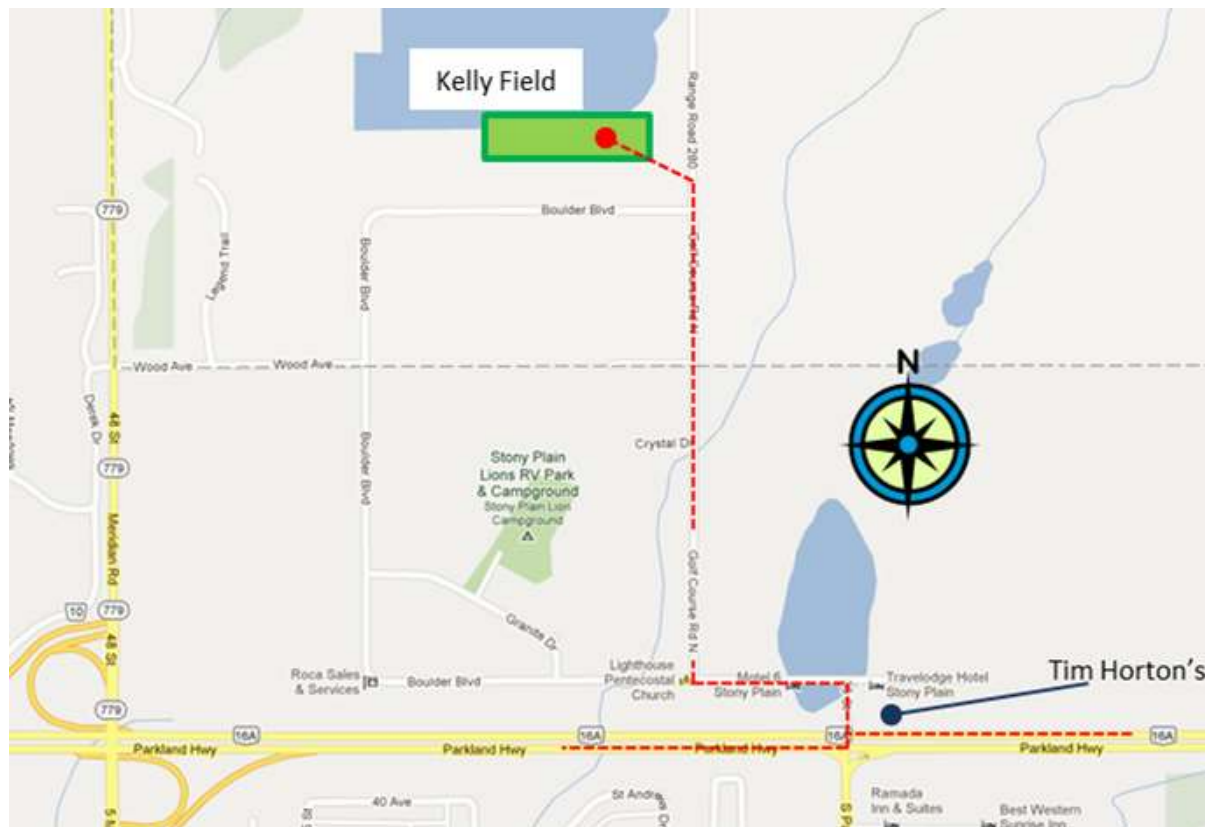
The Meridian Model Flyers Association was formed in June of 1995 and by the following September had 23 paid members. On October 23<sup>rd</sup>, 1995, the club was granted a charter by the Model Aeronautics Association of Canada (MAAC). The MMFA was incorporated pursuant to the Government of Alberta legislation, November 1995.

The Stony Plain and District Exhibition Society developed the flying field for a model aircraft show in 1994 which was organized as a fund raiser by the Stony Plain Lion's Club. SPADES kindly allowed the MMFA to lease this field for its flight operations. By the fall of 1996, a more suitable alternate site was located just to the north of the town of Stony Plain (see map).

### Location:

Our field is located just north of Stony Plain of Golf Course Road. It can be accessed by turning north at the lights by Boston Pizza in Stony Plain, turning left at the t-intersection then turning right at Golf Course Road. The entrance to the field is adjacent to the cell phone tower. There is parking near the field for club members and parking space outside of the field for visitors. If you are visiting and are not a MAAC member, please park away from the field.

Currently we have one grass runway, work stands, signs, windsock, frequency board and pilot stations. The best time to visit our field is on nice calm evenings or weekends.



Currently we have one grass runway, work stands, signs, windsock, frequency board and pilot stations. Guests & spectators are welcome any time the field gate is open. We have a variety of restaurants and overnight facilities including serviced camping within a five minute drive from the field. Overnight (no services) camping at the field is possible at specified events or by prior arrangement. We are only a twenty-five minute drive from the West Edmonton Mall. Our area has at least four well stocked hobby stores within an easy forty-five minute drive-perfect for rainy days.

## Meetings:

### **Monthly Meetings**

**Date:** First Tuesday of every month  
Sept though June  
**Time:** 7:00 pm  
**Location:** PERC building  
5413 - 51 Street Stony Plain AB.

### **Annual General Meeting (AGM)**

TBA

### Membership (Yearly)

<b>Open Member</b>	\$60.00
<b>Junior Member (14 yrs and less)</b>	\$ 5.00

Junior Members require participation of a parent.

### MAAC Membership

<b>Junior Member (18 and under)</b>	
1 year	\$10.00+GST
1 year w/magazine	\$21.50 +GST
<b>Open Member</b>	
1 year	\$ 80.00
3 year	\$216.00

MAAC membership is mandatory for participation in any flying activities with our club. MAAC carries general liability insurance

that covers the member and the club in case of incident. MAAC membership also brings with it a standard learning program and safety rules that help keep our sport safe and enjoyable.

## In General:

The models that we build and fly are certainly not toys. They have all the same parts and characteristics, and they fly using the same principles as their full size cousins. We take our activity and conduct ourselves quite seriously.

### General Field Rules

1. Hours of Operation – 8 AM to dusk daily
2. Field use is restricted to members and guests.
3. Valid AMA/MAAC membership is required
4. Pilots and/or authorized pit crew in/near pit and flight lines only.
5. Frequency control is in effect.
6. Radio range check to be done before starting flying activities.
7. Effective muffler required.
8. Point aircraft away from spectators during start and run up.
9. Use pilot stations (Max 4 models flying at once).
10. No flying behind flight lines.
11. Members are responsible for movements of guests and/or pets.
12. Last person leaving shall secure the access gate.
13. 3D flying is to be conducted on the north side of the runway and when no other flights are active
14. General field rules subject to change/amendment by club executive without prior notice
15. **ALL MAAC RULES WILL APPLY.**

Modeling is a great hobby, you can participate all year round, flying in the summer and building (*repairs*) in the winter. Model flying is for all ages (recommend at least age 12 minimum), and you can participate at whatever level you want. For the younger crowd (not us old fogies who are young at heart) we encourage the parents to become involved.

Model airplane clubs are everywhere in our country, and all over the world, so no matter

where your travels take you, flying your pride and joy is no problem. This is a great way to make new friends all over the world.

## Safety:

As part of MAAC and because we are such conscientious people we have our own rules about where and how people fly around our field. We want ensure that everyone flies and watches in safety.

## Field boundaries

Flying over the Dog Walk to the West, the road to the East, the pit area or the Concrete Crusher when it is in operation is strictly forbidden.

## For More information contact:

Don Furminger (Pres)	Ph (780) 946-6773
Dave Ellis (Treas/Mmbrshp)	Ph (780) 721-3339
David Geddes (Vice Pres)	Ph (780) 963-5860

Or visit our web site at  
<http://www.meridianmodelflyers.com>  
e-mail: [daveellis@live.ca](mailto:daveellis@live.ca)

## Our club is Chartered by



Model Aeronautics Association of Canada  
Unit 9, 5100 South Service Road  
Burlington, ON  
L7L 6A5  
Phone (905) 632-9808  
<http://www.maac.ca>